

St. Marys River Management Committee

March 7, 2022

Cori Hermle

Florida Department of Agriculture and Consumer Services
Office of Agricultural Water Policy



Florida Department of Agriculture and Consumer Services

Overview - Water Quality

- A total maximum daily load (TMDL) is a regulatory term in the U.S. Clean Water Act, describing a plan for restoring impaired waters that identifies the maximum amount of a pollutant that a body of water can receive while still meeting water quality standards
- Florida Watershed Restoration Act (FWRA) directs Florida Department of Environmental Protection (FDEP) to adopt basin management action plans (BMAPs)
 - BMAPs are roadmaps for the restoration of waterbodies, identifying management strategies to achieve total maximum daily loads (TMDLs)



Office of Agricultural Water Policy

- The FDACS OAWP is involved in
 - development and implementation of best management practices (BMPs);
 - agricultural water quality and water supply policy and planning;
 - administration of cost-share programs;
 - BMP research and demonstration;
 - providing mobile irrigation lab services; and
 - providing data and technical assistance to producers, stakeholders and state agencies.



Agricultural Best Management Practices

- Agricultural BMPs are just one of the management strategies to address agricultural nonpoint sources and to achieve the overall load reductions adopted in the TMDLs.
- Agricultural BMPs are
 - Management strategies, tools and practices that improve water quality, conserve water, enhance soil health and protect water resources
 - Based on the best available science and technology
 - Must be technically and economically feasible
 - Must balance production and water resource protection

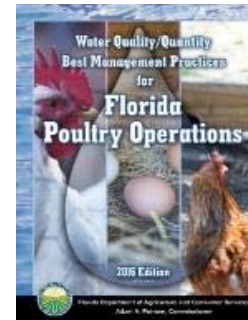
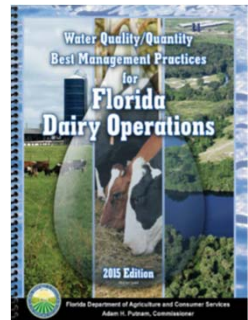
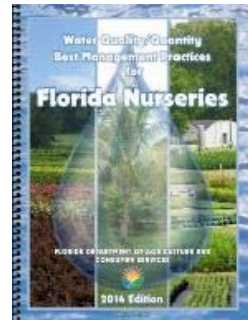
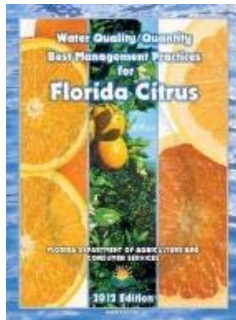
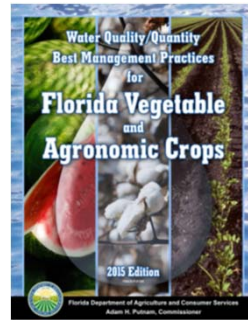
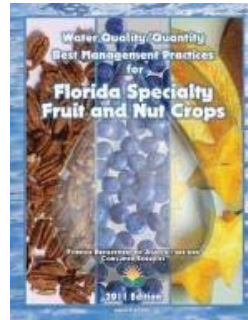
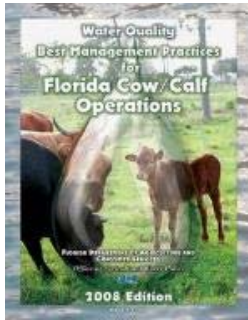


Benefits of Agricultural Best Management Practices

- Increase efficiencies in nutrient, irrigation and water management
 - Conservation and protection of water and environmental resources
 - Promote climate resiliency and carbon sequestration
 - Improve soil health
 - Promote groundwater recharge



Adopted BMP Manuals



Florida Department of Agriculture and Consumer Services

BMP Implementation Verification

- Process to verify the status of implementation of BMPs - required by 2016 law, strengthened by SB 712 (2020)
- Status of BMP implementation gathered from field staff site visits conducted on all enrolled farms, including record review
- Data utilized to track compliance and provide information for development of the required annual report to the Legislature
- Large workload - requires the assistance of enrolled producers and field staff working together



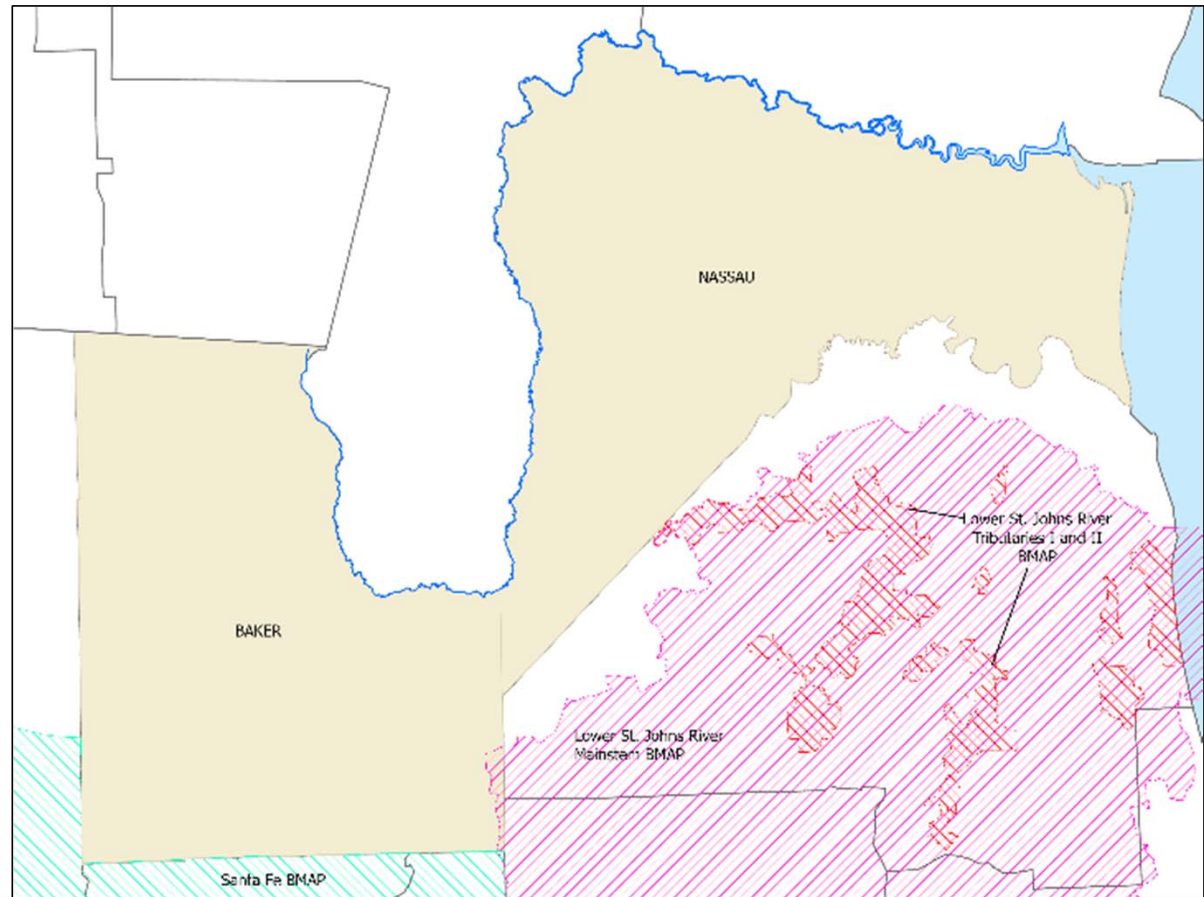
Producer Options in BMAP Areas

1. Sign an NOI and properly implement applicable BMPs for presumption of compliance, OR
2. Follow an FDEP or WMD-prescribed water quality monitoring plan at a Producer's expense

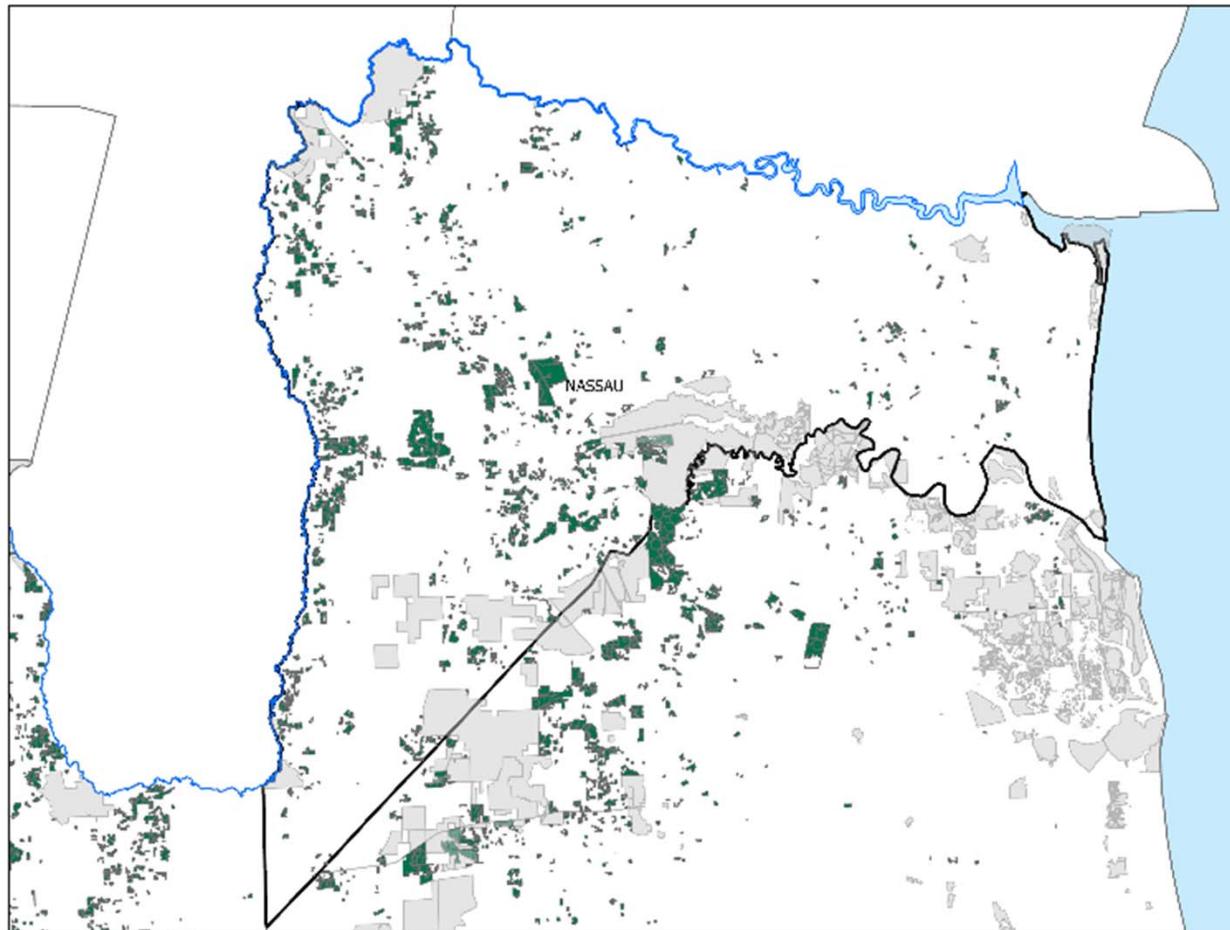


BMAP Areas

- No BMAP in Nassau County
- Minimal BMAP presence in either Baker County



Nassau County Agricultural Lands



- Managed Areas
- FSAID Agricultural Lands



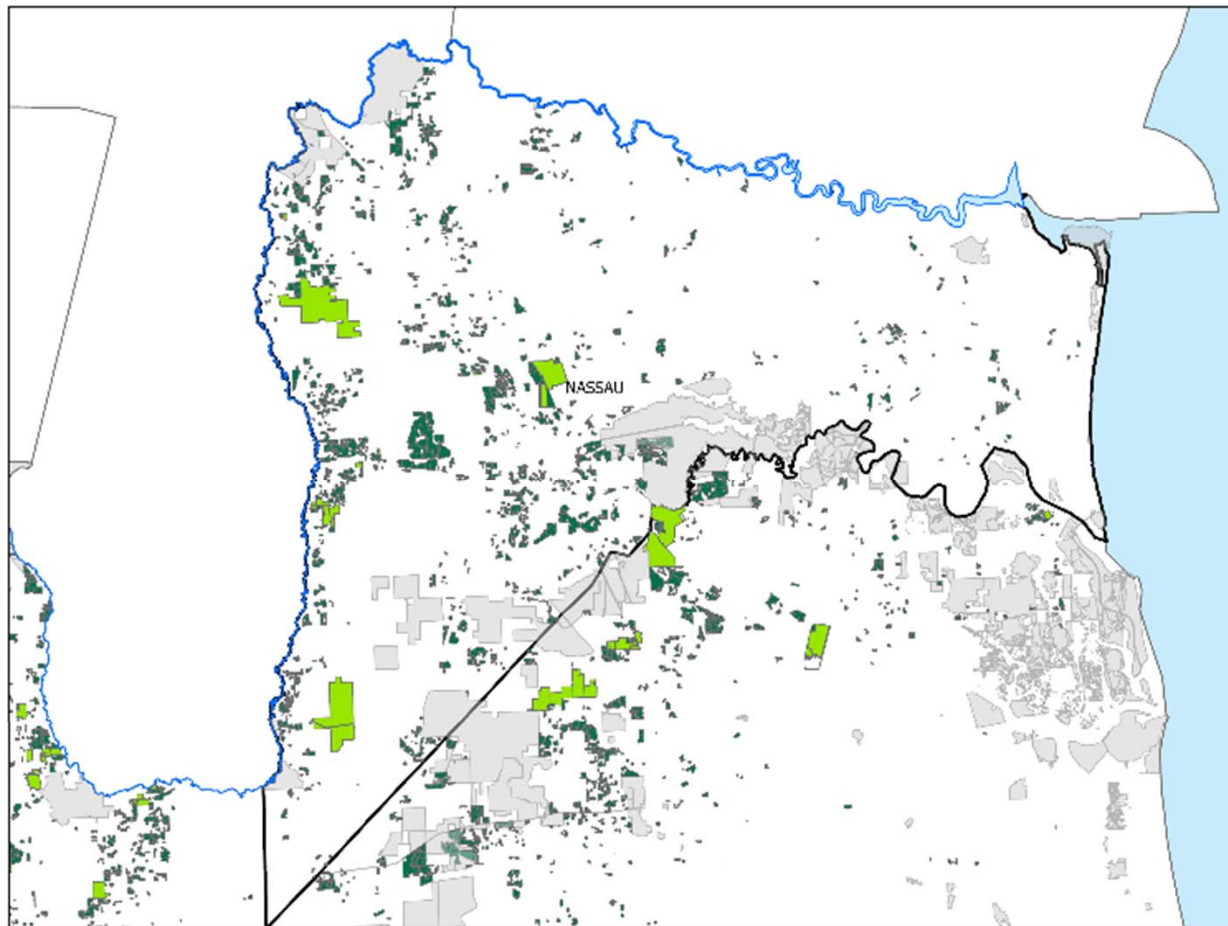
Florida Department of Agriculture and Consumer Services

Nassau County Agricultural Lands

Land Category	FSAID Agricultural Acreage
Grazing Land	12,533
Field Crops	2,679
Other	1,642
Livestock	1,538
Fallow	851
Hay	628
Greenhouse/Nursery	105
Fruit (Non-citrus)	33
Aquaculture	31
Vegetables (Fresh Market)	18
<i>Total:</i>	<i>20,058</i>



Nassau County BMP Enrollment



- Managed Areas
- FSAID Agricultural Lands
- BMP Enrolled Lands



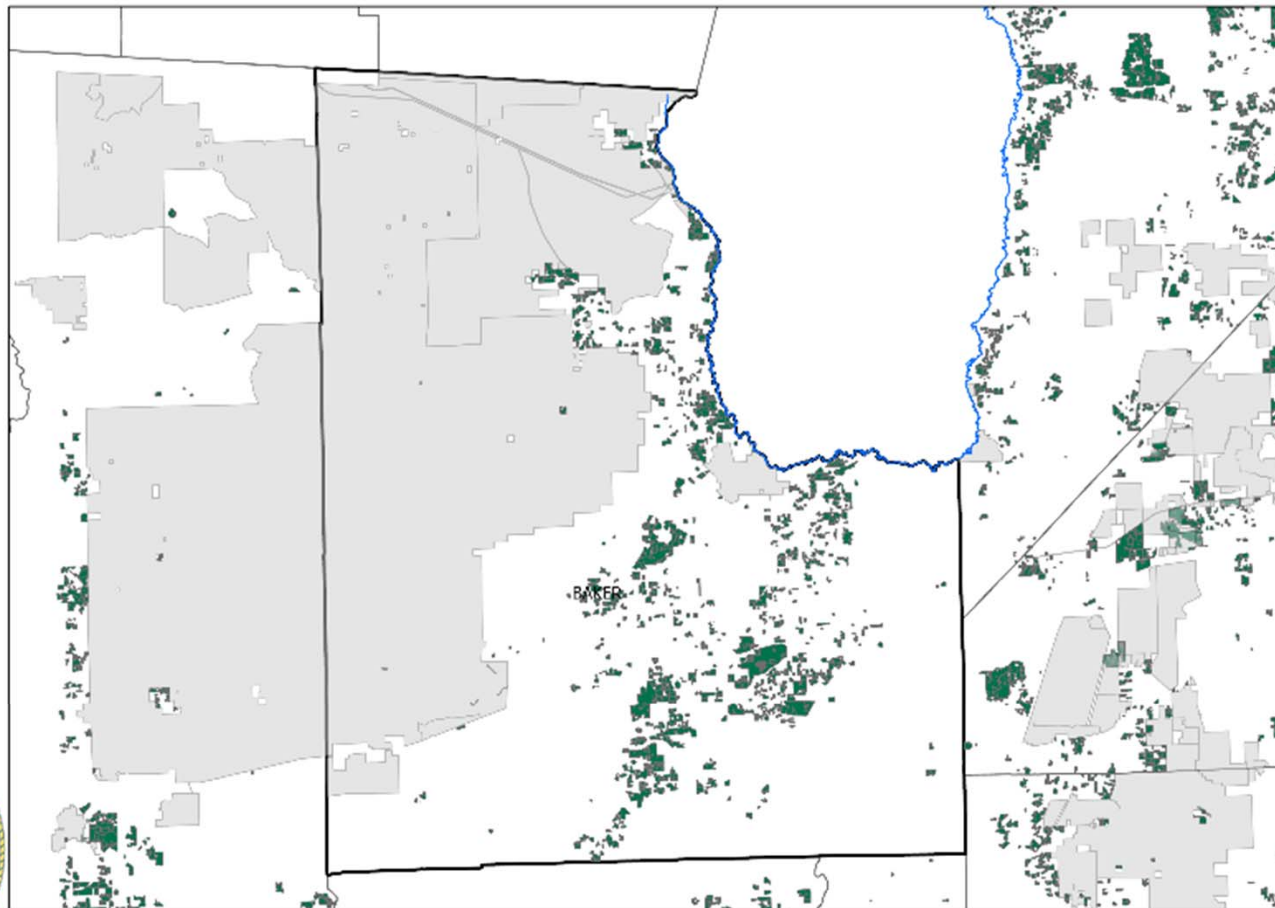
Florida Department of Agriculture and Consumer Services



Nassau County BMP Enrollment

Commodity	Acreage
Statewide Cow/Calf	2,526
Wildlife	1,087
Vegetables & Agronomic Crops (2015)	995
Statewide Nurseries	5
<i>Total:</i>	<i>4,613</i>



Baker County Agricultural Lands



-  Managed Areas
-  FSAID Agricultural Lands



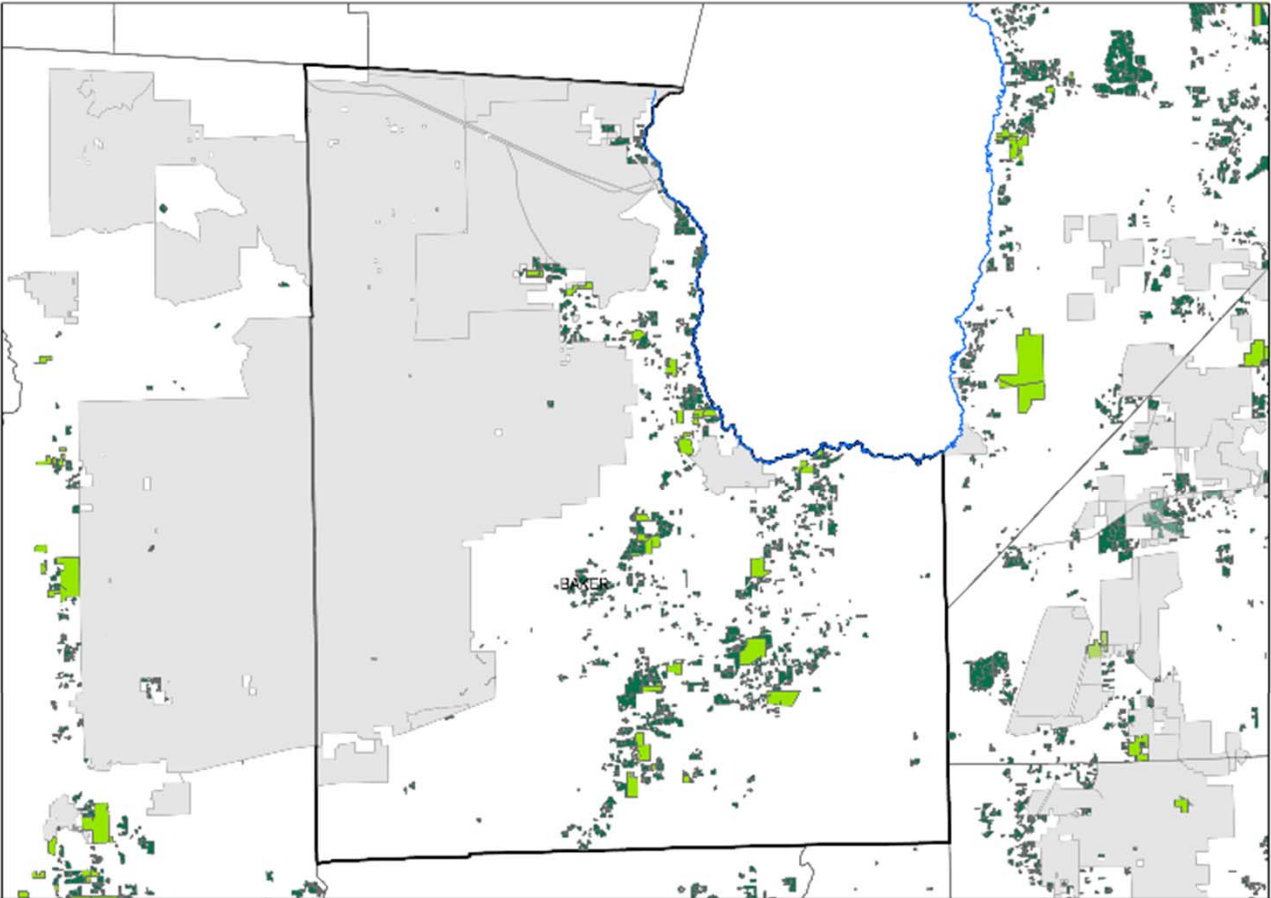
Florida Department of Agriculture and Consumer Services

Baker County Agricultural Lands

Land Category	FSAID Agricultural Acreage
Grazing Land	9,250
Livestock	1,575
Other	1,536
Field Crops	1,129
Fallow	735
Greenhouse/Nursery	149
Hay	78
Vegetables (Fresh Market)	45
Aquaculture	12
Fruit (Non-citrus)	5
<i>Total:</i>	<i>14,514</i>



Baker County BMP Enrollment



- Managed Areas
- FSAID Agricultural Lands
- BMP Enrolled Lands



Baker County BMP Enrollment

Commodity	Acreage
Statewide Cow/Calf	2,513
Vegetables & Agronomic Crops (2015)	923
Statewide Nurseries	500
Wildlife	257
<i>Total:</i>	<i>4,192</i>



Producer Outreach

www.FDACS.gov

- FAQs Document
- Continued collaboration with UF/IFAS Extension to raise awareness
- Under development:
 - Technical Assistance
 - Video Assistance



Commissioner Nicole "Nikki" Fried

Pay/Registrar Online

Farms

By Topic

Our Department

Home / Agriculture Industry / Water / Agricultural Water Policy FAQ

Agricultural Water Policy FAQ

Frequently asked questions about the Florida Department of Agriculture and Consumer Services' (FDACS) Office of Agricultural Water Policy, Best Management Practices (BMPs), and other topics

For information on the passage of Senate Bill 717 and new requirements for agricultural producers and landowners enrolled in the FDACS BMP program, see our [Senate Bill 717 FAQ](#) (2/2/18).

For more information about BMPs, see our [Agricultural BMPs FAQ](#) (5/14/18).

Select a question below to expand the answer.

- ▶ **What programs are administered by the FDACS Office of Agricultural Water Policy?**
- ▶ **What is a BMP?**
- ▶ **Are landowners required to implement BMPs?**
- ▶ **How are BMPs adopted?**
- ▶ **Does the FDACS Office of Agricultural Water Policy participate in BMP research and demonstration projects?**

Water

- Agricultural Best Management Practices
- Agricultural Permit/Dispersion Determinations
- Agricultural Water Policy FAQ**
- Agricultural Water Supply Planning
- Mobile Impaction Labs
- Office of Agricultural Water Policy

Florida Department of Agriculture and Consumer Services

2021 FDACS Legislative Report

Florida Department of Agriculture and Consumer Services
Office of Agricultural Water Policy



Status of Implementation of Agricultural Nonpoint Source Best Management Practices

July 1, 2021

Report to the Governor, the President of the Senate, and the Speaker of the House
Pursuant to Section 403.0675(2), F.S.
Publication No: FDACS P 01924 Rev. 07/21



Florida Department of Agriculture and Consumer Services

ESRI StoryMap

- <https://gis.fdacs.gov/portal/apps/MapSeries/index.html?appid=5ca19337a2d043d5a27820c330bf08f5>



Questions?

Cori Hermle, Environmental Consultant
Corinne.Hermle@FDACS.gov – (386) 643-1963



Florida Department of Agriculture and Consumer Services