

# Adopt-A-Stream Monitoring with St. Marys River Management Committee

Harold Harbert, Anne Stahley, & Seira Baker  
Georgia EPD

Jessica Warren, UGA Extension Service

# Adopt-A-Stream

## Volunteer Water Quality Monitoring

### Program Goals

- \* A Increase awareness of Georgia's nonpoint source pollution and water quality issues
- \* D Collect baseline water quality data
- \* O Gather observations of your stream condition
- \* P Encourage volunteers to form partnerships with state and local government and non-government agencies
- \* T Provide citizens with the tools & training to evaluate and protect waterways

# Adopt-A-Stream

## Volunteer Water Quality Monitoring

### Monitoring Programs

#### \* Chemical Monitoring

- \* Test for basic parameters: dissolved oxygen, temperature, pH, conductivity or salinity, Secchi disk
- \* Test monthly or as needed
- \* Average time 30-45 minutes per site

#### \* Bacterial Monitoring

- \* Tests for *E. Coli* bacteria (indicator bacteria)
- \* Test monthly or as needed
- \* Requires 24 hour incubation period and reading the plates
- \* Average time 20 minutes per site plus 20 minutes incubation

# Adopt-A-Stream

Volunteer Water Quality Monitoring

## Adopt-A-Stream Training

- \* Chemical Monitoring Training
  - \* 3 to 4 hour workshop
  - \* Classroom instruction & field study to learn how to use equipment
  - \* Introduction to database
  - \* QA/QC test to become certified
  
- \* Bacterial Monitoring Training
  - \* 3 hour workshop
  - \* Learn how to collect, plate, and read the *E. coli* sample plates
  - \* Introduction to database
  - \* QA/QC test to become certified

# Adopt-A-Stream

## Volunteer Water Quality Monitoring

### Monitoring Equipment

- \* Chemical Monitoring

- \* Basic shallow water monitoring kit, conductivity meter, salinity probe, Secchi disk

- \* Bacterial Monitoring

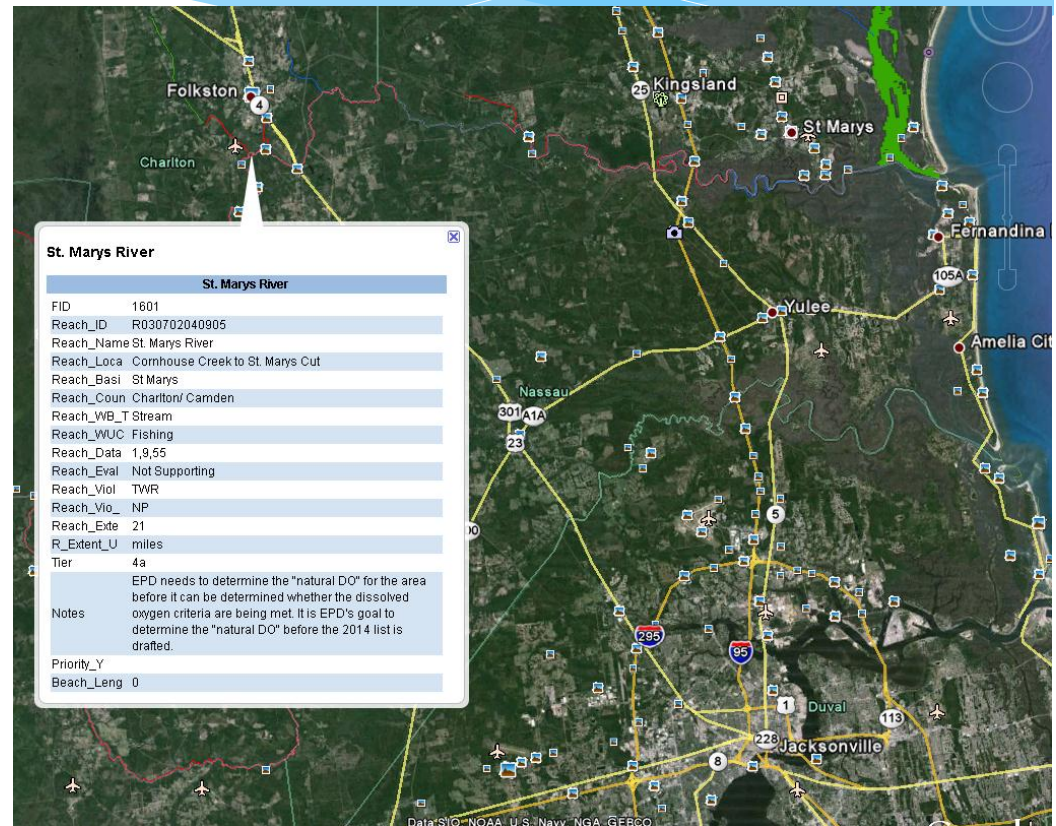
- \* Incubator, pipette, Petrifilm
- \* AAS can help with equipment loans



# Adopt-A-Stream

## Volunteer Water Quality Monitoring

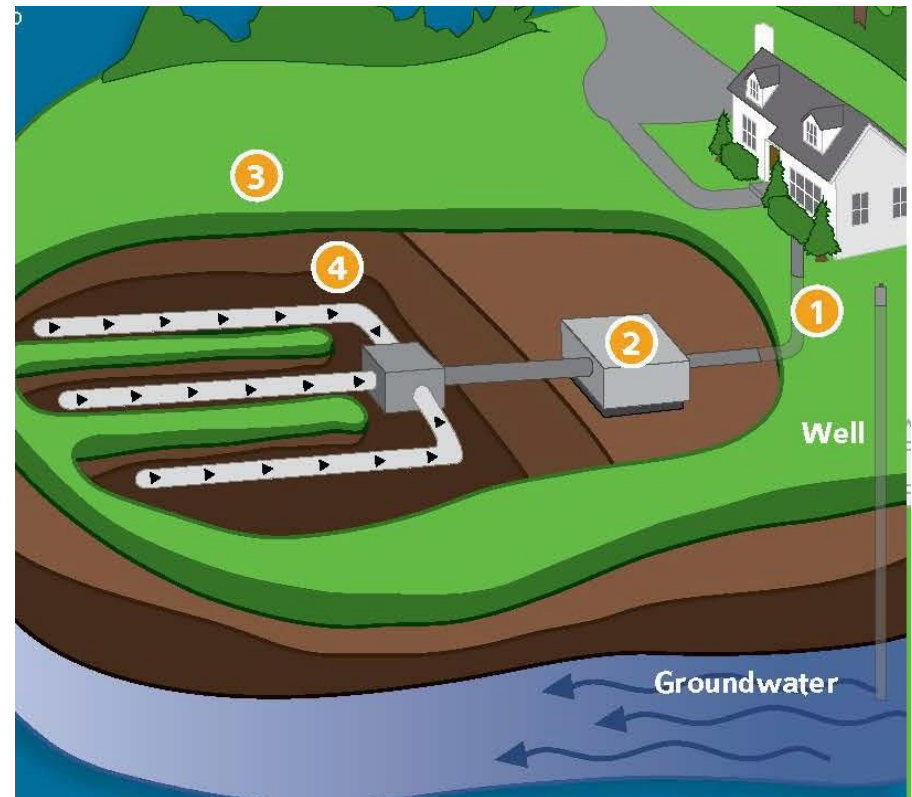
- \* St. Marys has concerns about dissolved oxygen levels
- \* Adopt-A-Stream monitoring can capture regulatory level data



# Adopt-A-Stream

## Volunteer Water Quality Monitoring

- \* St. Marys has concerns about septic leaks
- \* AAS *E. coli* monitoring can help identify problem areas



# Adopt-A-Stream

## Volunteer Water Quality Monitoring

- \* St. Marys has a desire to capture and share water quality data
- \* AAS has an EPA approved QAPP & provides field training
- \* AAS database:
  - \* Captures and shares QA/QC data
  - \* Displays data in graphs and on maps
  - \* Can download all data for further analysis





# Adopt-A-Stream

## Volunteer Water Quality Monitoring

### Data views

The screenshot displays the Georgia Adopt-A-Stream website interface. At the top, the logo for Georgia Adopt-A-Stream is visible, along with the text "GEORGIA'S VOLUNTEER WATER QUALITY MONITORING PROGRAM" and the "WATERSHED PROTECTION BRANCH" logo. The navigation menu includes links for "Adopt-A-Stream", "Get Involved", "Groups", "Sites", "People", "Data Views", "Data Entry", "Materials & Resources", "Teacher's Corner", "Contact us", and "Harbert Sign out".

Below the navigation menu, there are several sections:

- Announcements:** Includes "NEW Online Data Entry, Data Forms & QC Measures 2014" and "Meet Anne Stahley".
- Did you know?:** A tip stating, "You can view monthly summaries of your group's activities, such as the number of events".
- Summary Table:** A table showing statistics for September 8, 2014.
- Calendar:** A monthly calendar view for September 2014, showing events on Tuesday, Saturday, and Sunday.
- Map:** A map of Georgia showing monitoring sites. A pop-up window for "Group G-1346 Eyes on the Upper Flint" provides details for "Site S-1637 Flint River", including 65 monitoring events and a list of surrounding counties: Upper Flint River watershed (HUC8 03130005), Molena Georgia, and Upson County Georgia.

Sep 8, 2014	Groups	Sites	Events	Data	Volunteers	Newsletters
Currently active	188	513	4948	20382	2634	<a href="#">Apr-Jun 2014</a>
Database totals	888	1534	26807	130203	20627	<a href="#">Archived</a>

**Monday, September 8** View monthly calendar

**Tuesday, September 16**  
6:00pm Cobb Co. Chemical Monitoring Workshop

**Saturday, September 20**  
9:00am Sandy Creek Nature Center Chemical and Macroinvert

**Saturday, October 4**  
Forsyth County - Macroinvertebrate Workshop

**Saturday, October 11**

AAS Coordinators and Trainers can post on the calendar. Contact the State Office for more information: [aaas@aand.org](mailto:aaas@aand.org).

# Adopt-A-Stream

## Volunteer Water Quality Monitoring

### Group and site page

**Georgia Adopt-A-Stream**  
GEORGIA'S VOLUNTEER WATER QUALITY MONITORING PROGRAM

WATERSHED PROTECTION BRANCH

Adopt-A-Stream | Get Involved | Groups | **Sites** | People | Data Views | Data Entry | Materials & Resources | Teacher's Corner | Contact us | [Herbert Sign out](#)

Search sites:  [Edit](#)

**[S-1642] Elkins Creek** is one of seventeen sites monitored by group **Eyes on the Upper Flint**.

Site description: at bridge on Dripping rock rd.  
Special information: down stream from LAS site

This site has **sixty-two recorded monitoring events**.  
[\[Download to Excel\]](#)

At a glance	
Site	S-1642 Elkins Creek
Group	G-1346 Eyes on the Upper Flint
Lat. Long	32.9703, -84.5161
Altitude	201 meters (659 feet)
Watershed	Upper Flint River
City	Molena, GA
County	Upson
Events	62
First sampled	08/05/2010

Driving directions

Map

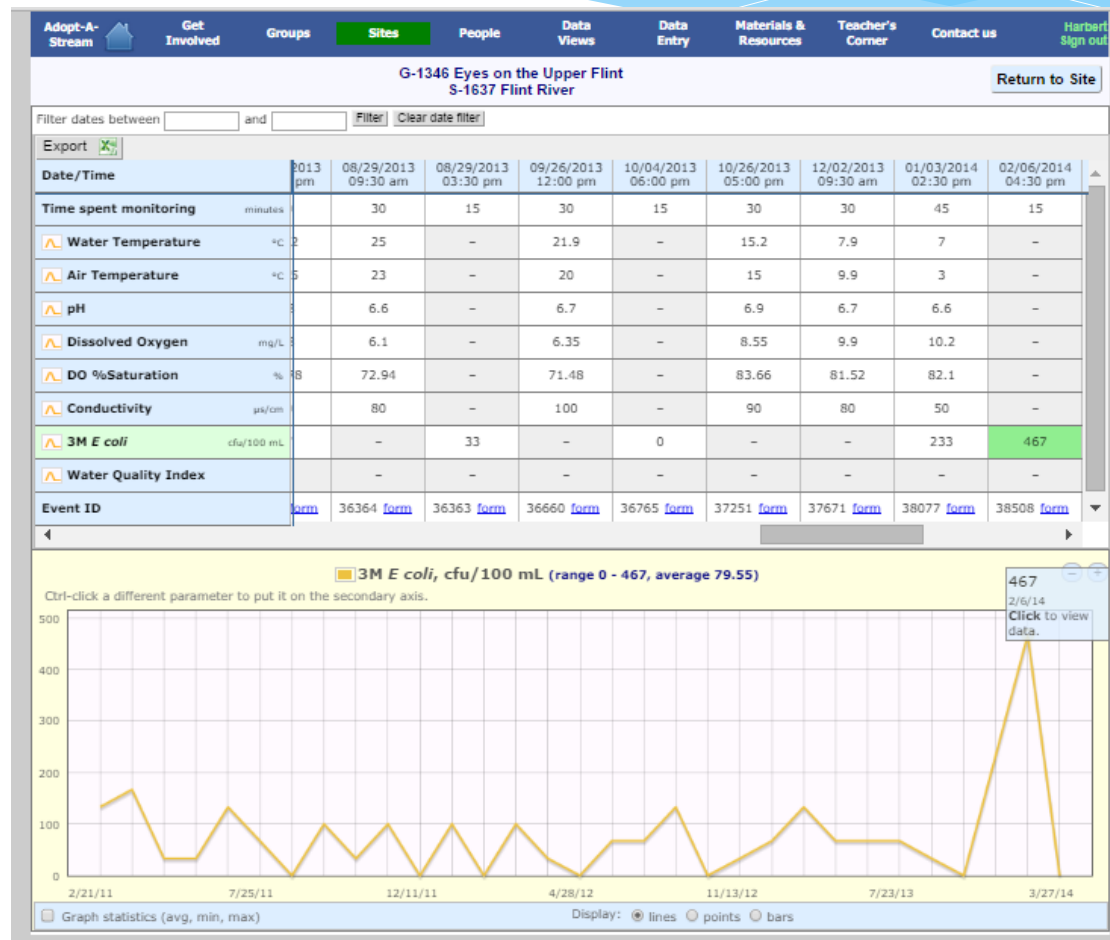
**Click a graph for an interactive version**

- Dissolved Oxygen
- DO %Saturation
- pH
- Water Temperature
- Conductivity
- E. coli (3M Petrifilm)

# Adopt-A-Stream

## Volunteer Water Quality Monitoring

Site data & graphs



# Adopt-A-Stream

## Volunteer Water Quality Monitoring

- \* St. Marys has a desire to capture and share water quality data
- \* St. Marys has concerns about dissolved oxygen levels and *E. coli* in the water

Adopt-A-Stream can help

# Adopt-A-Stream

## Volunteer Water Quality Monitoring

- \* St. Marys has a desire to capture and share water quality data
- \* AAS database:
  - \* Captures QA/QC data
  - \* Displays data in graphs and on maps
  - \* Can download all data for further analysis